



Ritsumeikan CO-OP Membership Guide



Cafeterias

Stores

Book Stores

Travel Services

Insurance

Real Estate Office

Beyond Borders

Welcome to Ritsumeikan University!

Ritsumeikan CO-OP would like to support your studies and daily life in Japan!

On campus, we have stores, cafeterias, and bookstores that provide many goods and services for you. Most students and many teaching staff/administrators join our CO-OP.

The entry price is based on member investment, so we hope you will take the time to become a member of this system. In order to join, a refundable deposit for CO-OP shares is requested. (10 shares at 5,000 yen). Deposits will be fully returned, when you leave university.

立命館生協は日本でのみなさんの研究や日々の生活をサポートします！

98%の学生と多くの教職員が当生協に加入しています。事業は組合員の出資を基盤としております。是非この機会にご加入ください。

加入には生協への出資金が必要です。(10口 5,000円) 出資金は卒業時に返還いたします。



Cafeterias



Stores



Book Stores



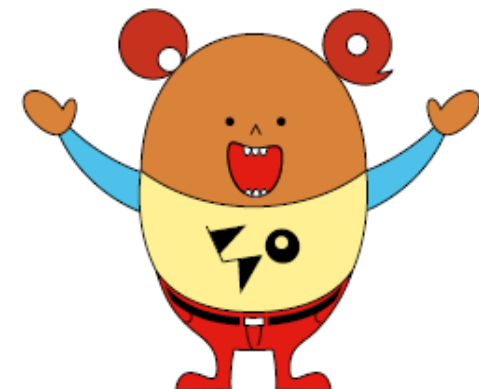
Travel Services



Insurance



Real Estate Office





Please present your Univ Co-op app or your Membership Card at Co-op Stores

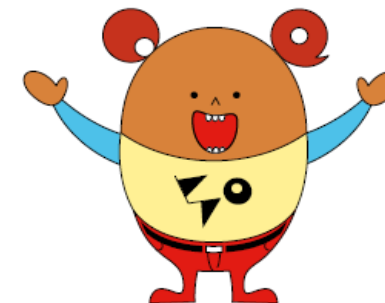


MEMBERSHIP BENEFITS

- ◆Points with CO-OP E-Money
 - 1% at the cafeteria
 - 10% on books, magazines, comic books.

- ◆You can apply for CO-OP “Students Comprehensive Mutual Insurance” and “Personal Liability Insurance for Students”

Please show your App or Membership Card at the cashier. Without showing them, you cannot buy goods or use CO-OP shops and cafeterias at the membership price. (Non-members incur an additional 3 to 55 Yen charge)





Student Comprehensive Mutual Insurance

*Please apply with the membership of Ritsumeikan CO-OP!

<p>Student Comprehensive Mutual Insurance (G500 Course)</p>		<p>System of mutual help to prepare the student to deal with injury and illness. *It isn't National Health Insurance.</p>
<p>Personal Liability Insurance for Students(19H)</p>		<p>Personal liability insurance to cover personal injury or property damage you cause to other people. *Includes out-of-court settlement mediation services. (Limited to within Japan)</p>
<p>Personal Liability Insurance for Students + Special clause for persons living alone(19HK)</p>		<p>Personal Liability Insurance for Students + Coverage against risk of living alone.</p>



How to Join The CO-OP

① Please visit the Co-op office on your campus with your student ID and 5,000 yen.
 *If you'll purchase insurance, also bring cash for the premium.

Please check the brochure for details. The same information is available online.



CO-OP Guide



Student Comprehensive Mutual Insurance

Office of Ritsumeikan CO-OP

Kinugasa

Kinugasa Center
 [Shigakukan B1F]
 TEL 075-465-8280
 [Mon~Fri]
 ~9/23 Fri. | 10:00~15:00
 9/26 Mon.~ | 10:00~17:00

BKC

BKC Center
 [Link Square]
 TEL 077-561-3918
 [Mon~Fri]
 ~9/23 Fri. | 11:00~15:00
 9/26 Mon.~ | 10:15~16:30

OIC

OIC Center
 [building C / OIC Shop]
 TEL 072-645-4103
 [Mon~Fri]
 ~9/23 Fri. | 11:00~15:00
 9/26 Mon.~ | 10:30~16:00